

SOLAR PV WATER HEATER



- MAINTENANCE FREE
- SOLAR GREEN
- SAFETY SYSTEM
- EAST INSTALL



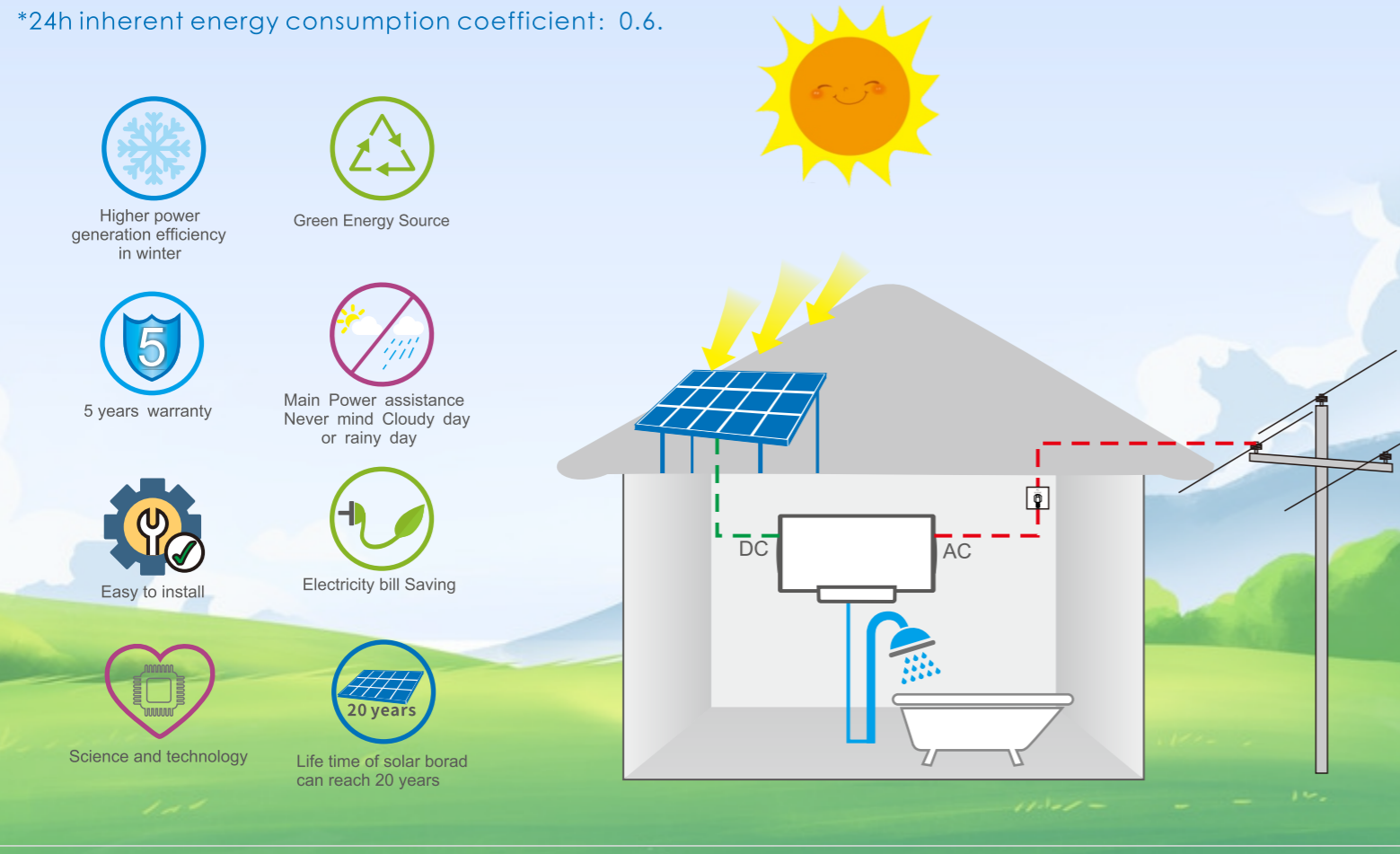
The working principle of direct current heating module

The direct current generated by photovoltaic solar module is transferred to the water heater through cables to heat the water.

Advantages:

- 1) The 1st improved Solar PV DC water heater in the world
- 2) Combine the high-quality electric water heater with Solar PV panel
- 3) DC and AC can transfer to work: AC power just a back-up, even in winter nearly no need electricity
- 4) Only with 400w-600w solar panel in series for different area according to buyer's actual demand.
- 5) It is popular in the areas with plenty of sunshine, high electricity bills and abnormal AC power supply.
- 6) It can be installed in the bathroom/kitchen/ wall cabinet ect. No need worries the distance between the PV panel.
- 7) For extremely cold area, can with Antifreeze function to protect inner tank.
- 8) Auto Mode: Can set the specified AC HEATING time as you wish.

- *Photoelectric utilization efficiency: above 99.8.
- *Hot water output up to 80%.
- *Electro-thermal conversion up to 99%.
- *3.5cm insulation layer 24h cooling $\leq 12^{\circ}\text{C}$.
- *24h inherent energy consumption coefficient: 0.6.



- Higher power generation efficiency in winter
- Green Energy Source
- 5 years warranty
- Main Power assistance Never mind Cloudy day or rainy day
- Easy to install
- Electricity bill Saving
- Science and technology
- Life time of solar board can reach 20 years

A01



A02



Heating System	AC & DC heating		
Main parameter of AC heating	220V~,50Hz, 2KW,9.09A		
Temperature of AC Heating	30-75°C		
Heating System	65°C ON / 75°C OFF		
Capacity(L)	60	80	100
Main parameter of DC heating	DC80V, 1.6KW	DC98V, 1.2KW	
QTY of PV panel, pcs	1~2 in series	2~3 in series	2~3 in series
Net Size(mm)	Φ470*685	Φ470*815	Φ470*945
Packing Size(mm)	598*535*760	598*535*890	598*535*1020
Load QTY(20'GP/40'GP/40'HQ)	111/234/276	95/200/235	83/175/205

A03



Heating System	AC & DC heating				
Main parameter of AC heating	220V~,50Hz, 2KW,9.09A				
Temperature of AC Heating	30-75°C				
Heating System	65°C ON / 75°C OFF				
Capacity(L)	40	50	60	80	100
Main parameter of DC heating	DC80V, 1.6KW			DC98V, 1.2KW	
QTY of PV panel, pcs	1	1	1~2 in series	2~3 in series	2~3 in series
Net Size(mm)	Φ390*690	Φ390*785	Φ390*900	Φ470*815	Φ470*945
Packing Size(mm)	525*455*780	525*455*875	525*455*990	598*535*890	598*535*1020
Load QTY(20'GP/40'GP/40'HQ)	145/306/360	129/273/321	114/241/283	95/200/235	83/175/205

A05



A06



Heating System	DC heating				
Temperature of DC Heating	65°C ON / 75°C OFF				
Capacity(L)	40	50	60	80	100
Main parameter of DC heating	DC80V, 1.6KW			DC98V, 1.2KW	
QTY of PV panel, pcs	1	1	1~2 in series	2~3 in series	2~3 in series
Net Size(mm)	Φ390*690	Φ390*785	Φ390*900	Φ470*815	Φ470*945
Packing Size(mm)	525*455*780	525*455*875	525*455*990	598*535*890	598*535*1020
Load QTY(20'GP/40'GP/40'HQ)	145/306/360	129/273/321	114/241/283	95/200/235	83/175/205